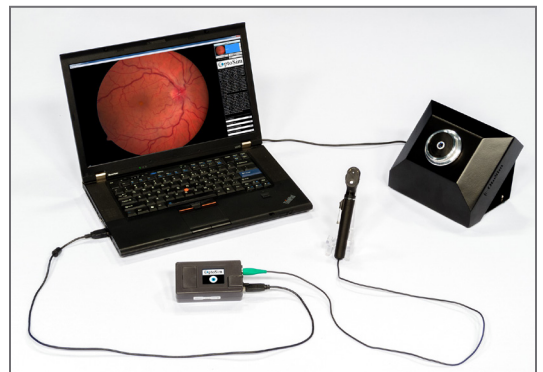
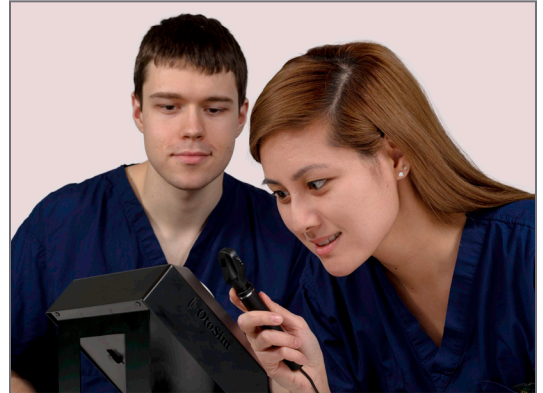


## OphthoSim™ Features

**OphthoSim™** is an integrated system developed by OtoSim Inc. The OphthoSim™ dynamically and interactively trains students in diagnosing eye pathologies through hands-on experience and with extensive content.

- **OphthoSim™ Ophthalmoscope**
  - Instrumented ophthalmoscope to detect user's movement and orientation
  - Tracks user movements to control the display of the appropriate retinal region through the OphthoSim™ Eye
- **Realistic OphthoSim™ Eye Geometry**
  - Replicates the magnification of lens in the human eye
  - Adjustable iris that dilates and constricts to add complexity
  - Saccade function can be activated to replicate different clinical conditions
- **OphthoSim™ Content**
  - Training modules to practice & evaluate ophthalmoscopy technique
  - Testing routines to rate diagnostic accuracy and efficiency
  - Retinal pathologies include:
    - Normal Retinas
    - Diabetic Retinopathy
    - Hypertensive Retinopathy
    - Papilledemas
  - Detailed descriptions of each clinical scenario
- **OphthoSim™ Software**
  - Enables high-degree of student-instructor interaction
  - Enables the instructor to monitor the region of retina being viewed by the student
  - Landmarking function enables instructor to highlight specific characteristics of pathologies in the region viewed by the student
  - Intuitive, easy-to-use graphic interface
- **Reliability and Interoperability**
  - OphthoSim™ is interoperable with the OtoSim™ Otoscopy Training and Simulation System platform, which has been proven in the classroom to improve diagnostic accuracy by 44%



## Specifications

Dimensions: w: 5.5" (15cm) x h: 6" (16cm) x l: 7.5" (20cm)  
 Weight: 5lbs (2.3 kg)  
 Power: Standard USB 2.0 port (5V DC)  
 Ease of Use: Plug & Play  
 Standards: Electronics are FCC, CE, RoHS compliant

### OphthoSim™ Unit Includes:

- OphthoSim Simulator Base
- OphthoSim Software
- OphthoSim Sensor Relay Box
- OphthoSim Ophthalmoscope
- Connection Cables
- Protective Case
- 1-Year Warranty

## Accessories & Extended Warranties

- Pre-installed & Configured Laptop
- Extended Warranty – Total of 2 or 3 Years

A PRODUCT OF  **OtoSim**  
BETTER EAR AND EYE TRAINING. BETTER OUTCOMES

## Table of Contents

(Last revised: June 2013)

### 1. Introduction

- 1.2 History of Ophthalmoscopy
- 1.3 Normal Anatomy of the Ocular Fundus
- 1.4 Examination Principles and Technique

### 2. Visual Perception Tests

#### 3. Instrument Use

- 3.2 Skill Level 1
- 3.3 Skill Level 2
- 3.4 Skill Level 3
- 3.5 Order of Examination

#### 4. Retinal Feature Identification

- 4.2 Normal Feature Identification
  - 2 Normal Landmarks 1
  - 3 Normal Landmarks 2
  - 4 Normal Landmarks 3
  - 5 Normal Landmarks 4
  - 6 Normal Landmarks 5
- 4.3 Pathological Feature Identification
  - 1 AV Nicking
  - 2 Cotton-Wool Spot
  - 3 Hard Exudate
  - 4 Macular Star
  - 5 Retinal Hemorrhage
  - 6 Retinal Neovascularization

#### 5. Pathology

- 5.2 Normal
- 5.3 Retinal Vascular Disease
  - 1 Diabetic Retinopathy
    - 1.1 Non-Proliferative Diabetic Retinopathy
    - 1.2 Proliferative Diabetic Retinopathy
  - 2 Hypertensive Retinopathy
  - 3 Retinal Vein Occlusion
    - 3.1 Branch
    - 3.2 Central
    - 3.3 Hemi-Retinal

- 5.3 4 Retinal Artery Occlusion
  - 4.1 Branch
  - 4.2 Central
- 5 5 Retinal Arteriolar Macroaneurysm
- 5.4 Retinal Detachment
- 5.5 Age-Related Macular Degeneration
  - 1 Atrophic Dry
  - 2 Neovascularization Wet
  - 3 End-stage Age-related Macular Degeneration
- 5.6 Tumors
  - 1 Primary
    - 1.1 Choroidal Nevus
    - 1.2 Choroidal Melanoma
    - 1.3 Choroidal Osteoma
    - 1.4 Choroidal Hemangioma
  - 2 Secondary
    - 2.1 Choroidal Metastasis
- 5.7 Glaucoma
- 5.8 Optic Neuropathies
  - 1 Papilledema
  - 2 Anterior Ischemic Optic Neuropathy
  - 3 Infiltrative Optic Nerve Lesions
- 5.9 Trauma
  - 2 Choroidal Rupture
- 5.10 Misc
  - 1 Valsalva Retinopathy
  - 2 Ocular Ischemic Syndrome

#### 6. Self Examination

- 6.2 Self Exam 1
- 6.3 Self Exam 2
- 6.4 Self Exam 3
- 6.5 Self Exam 4
- 6.6 Self Exam 5
- 6.7 Self Exam 6

#### 7. Examination

- 7.1 Exam 1
- 7.2 Exam 2
- 7.3 Exam 3